

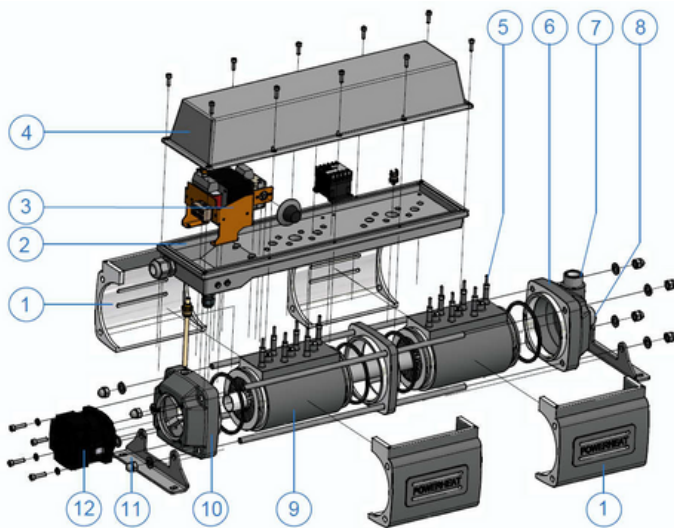


## POWERHEAT

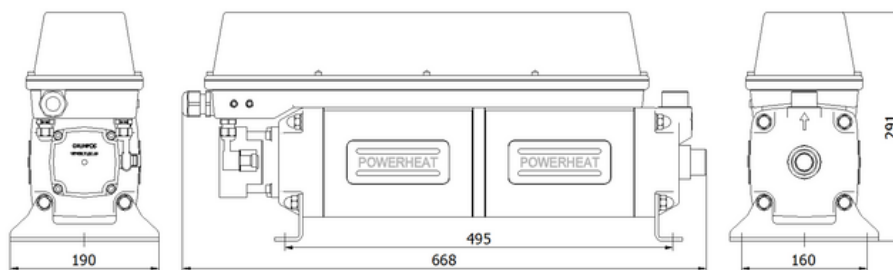
POWERHEAT is the new style (engine) pre-heater. The compact design, in combination with the chosen materials, integrated pump, adjustable thermostat and all required control and safety features, makes it an exceptional high quality heater.

The heat exchanger is based on a die-cast tubular component in aluminum with a large heating surface. The heating element is embedded in aluminum during the die-casting process so therefore completely corrosion proof and not in direct contact with the coolant or liquids. This means a more effective heating and no negative side effects for the coolant or liquids. In addition the Aluminum AS13 is finished with a Teflon coating.

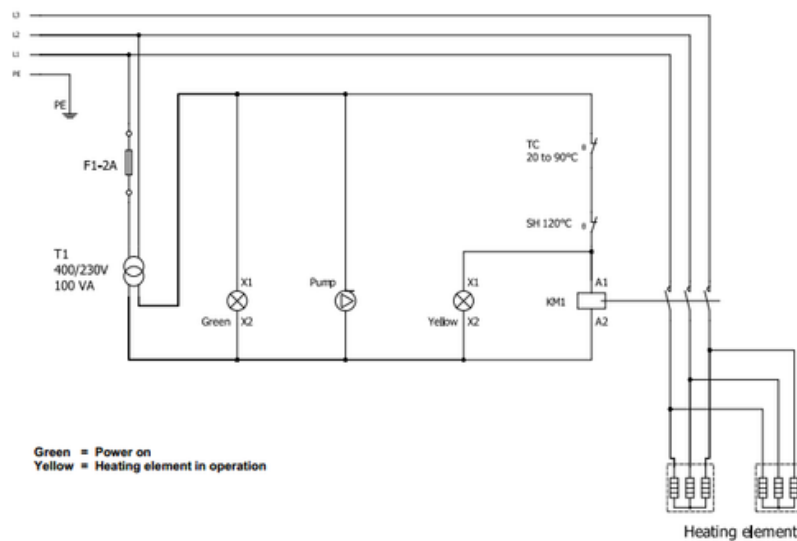
POWERHEAT model	PH3400-12000	PH3400-15000	PH3400-18000
<b>Voltage range</b>	400 V / 50-60 Hz / 3 Ph	400 V / 50-60 Hz / 3 Ph	400 V / 50-60 Hz / 3 Ph
<b>Heat power</b>	12000 W	15000 W	18000 W
<b>Thermostat</b>	20-90°C rated 25 A	20-90°C rated 25 A	20-90°C rated 25 A
<b>Safety thermostat</b>	120°C	120°C	120°C
<b>Max. operating pressure</b>	10 bar / 145 psi	10 bar / 145 psi	10 bar / 145 psi
<b>Surface load</b>	4 W/cm <sup>2</sup>	5 W/cm <sup>2</sup>	6 W/cm <sup>2</sup>
<b>Water inlet and outlet</b>	2 x 1"	2 x 1"	2 x 1"
<b>Box ingress protection</b>	IP 67	IP 67	IP 67
<b>Pump power range</b>	52 W / 230 V / 50-60 Hz	52 W / 230 V / 50-60 Hz	52 W / 230 V / 50-60 Hz
<b>Pump flow rate</b>	2.8 m <sup>3</sup> /h @ 3 m	2.8 m <sup>3</sup> /h @ 3 m	2.8 m <sup>3</sup> /h @ 3 m
<b>Pump ingress protection</b>	IP 44	IP 44	IP 44
<b>Weight</b>	29.3 kg	29.3 kg	29.3 kg
<b>Dimensions (LxWxH)</b>	668 x 190 x 291 mm	668 x 190 x 291 mm	668 x 190 x 291 mm



- 1 Side cover
- 2 Base Plate
- 3 Transformer
- 4 Top cover
- 5 Heating element
- 6 Front cover
- 7 Fluid OUT 1"
- 8 Fluid IN 1"
- 9 Heat exchanger
- 10 Rear cover
- 11 Support
- 12 Pump



POWER SUPPLY  
3 x 400V 50Hz



Your PowerHeat partner:

**EN-GEN**  
DIESEL PRODUCTS

En-Gen Diesel Products  
Unit 15 Faraday Road,  
Gapton Hall Industrial Estate  
Great Yarmouth, Norfolk, NR31 0NF

+44 (0)1493 738 397  
sales@engen-diesel.com  
www.engen-diesel.com

PowerHeat B.V.  
Robijn 930, 3316 KE  
Dordrecht, the Netherlands

**POWERHEAT**

+31 (0)85 0709430  
post@powerheat.nl  
www.powerheat.nl